



Rally Connector for JDeveloper User Guide

Version 1.0.0 Beta - 1

Introduction

This document provides Installation and Setup instructions for the JDeveloper Rally Connector.

Using the Rally JDeveloper Connector

Following are the pre-requisites of the Rally Connector for JDeveloper:

Install the Rally Connector for JDeveloper

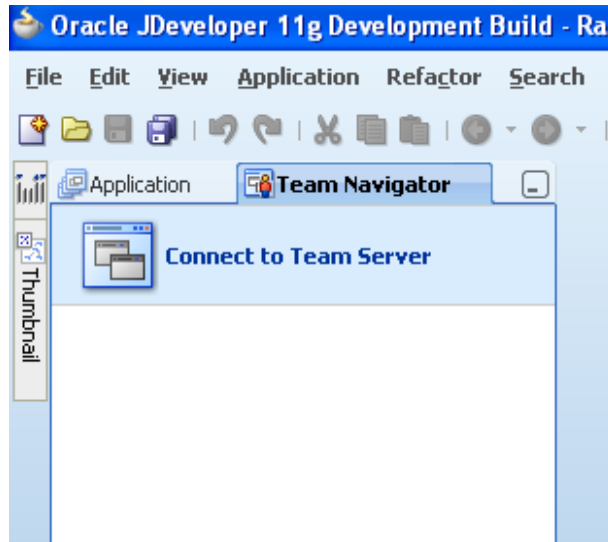
Follow the steps in the [Rally Connector for JDeveloper Setup and Installation Guide](#).

Login to Team Server

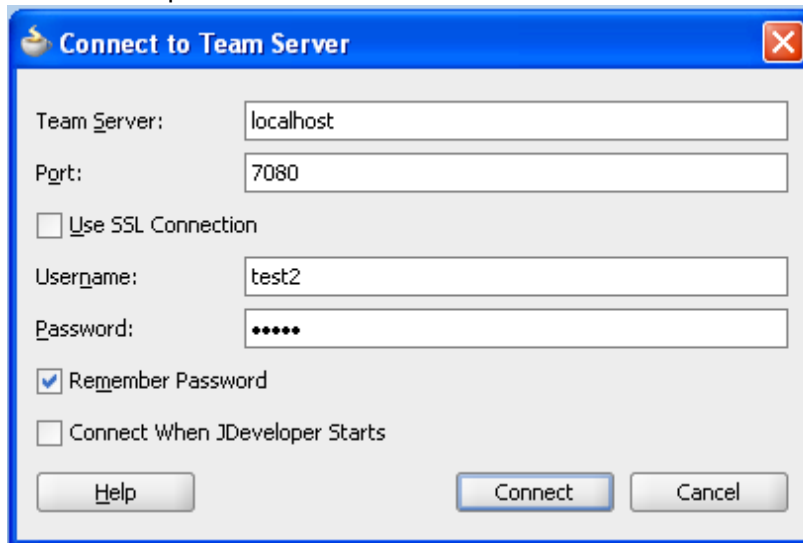
Once the installation is complete, the connector can be accessed by login into team server.

The steps are as follows:

1. Open JDeveloper.
2. Open Team Navigator by clicking on Team Navigator in View Menu.
3. Click on "Connect to Team Server" shown in Team Navigator panel.



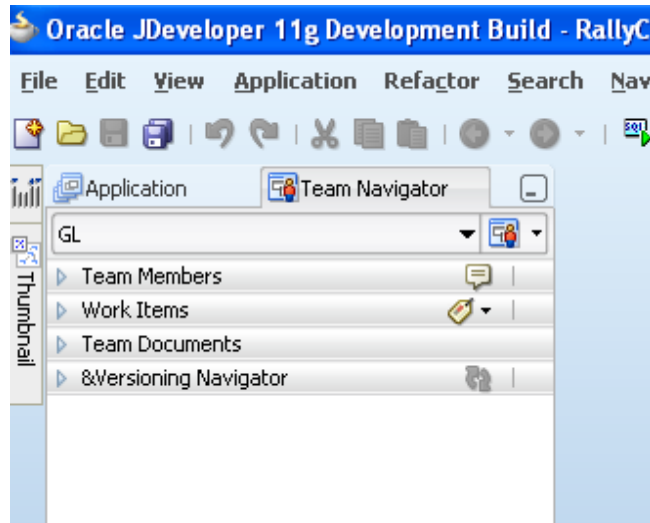
4. Specify TPC server and port detail.
5. Specify username and password of user created in TPC



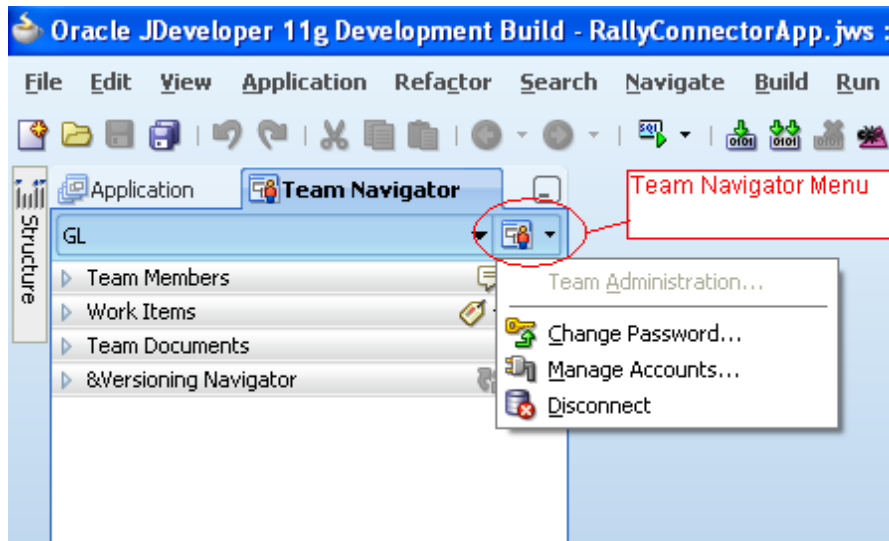
6. Click on connect.

Login into Rally connector

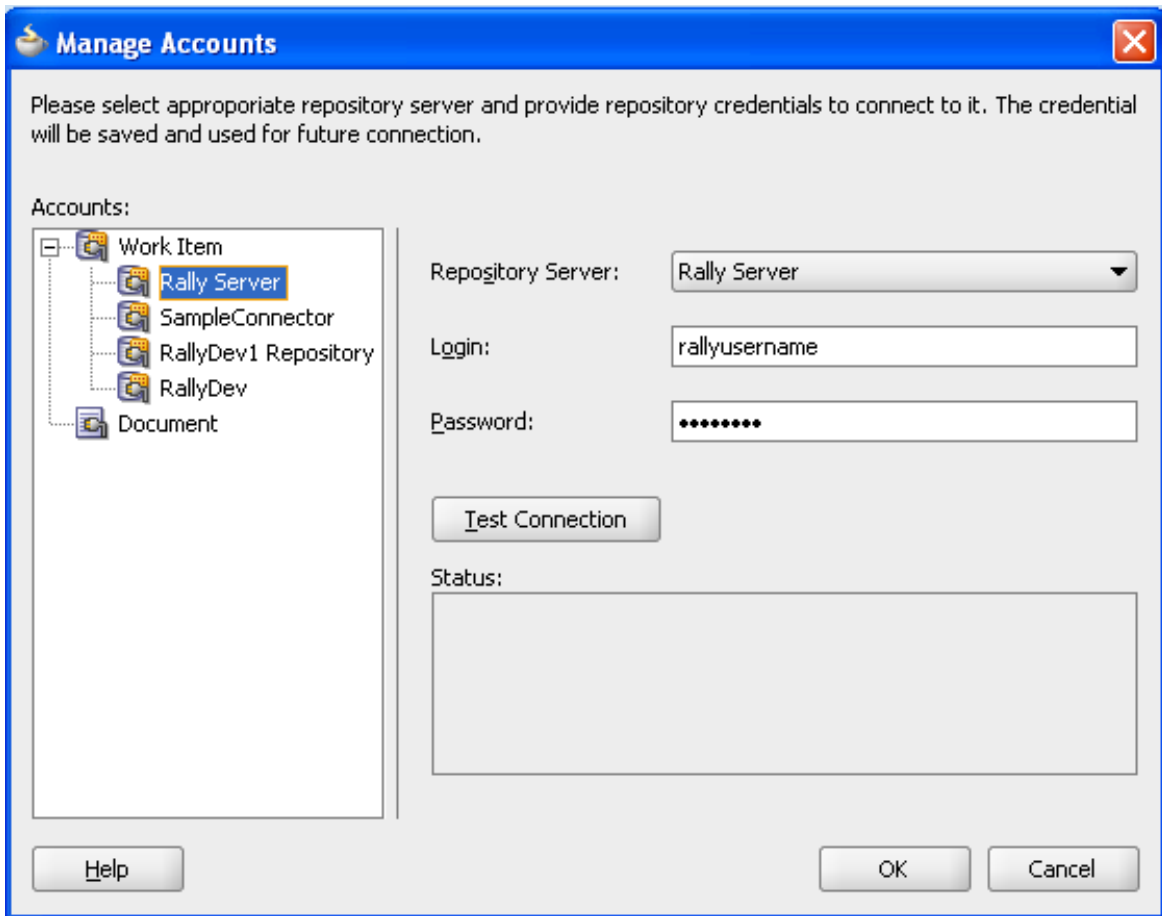
1. On successfully login into Team Server, Team Navigator panel will show Team Member, Work Item, Team document and Version navigator palettes.



2. Select "Manage Account" from Team Navigator Menu.



3. Select Rally repository from Work Item in Manage Account window.

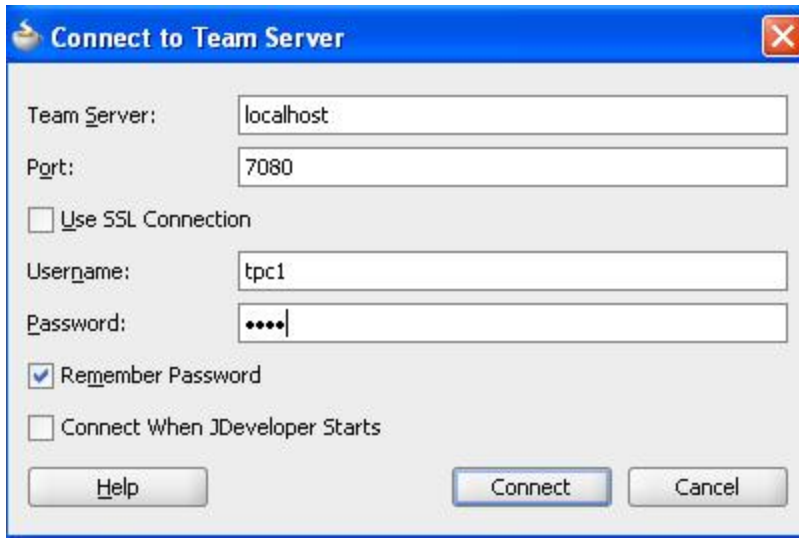


4. Specify rally username/password and click on Test Connection.
5. On successful login, success will be display in Status area. If error message is displayed, go to the "TroubleShooting" section show below
6. Click OK.

Troubleshooting:

If "Test Connection" displays error messages, please follow the steps mentioned below to verify the Rally repository parameter details:

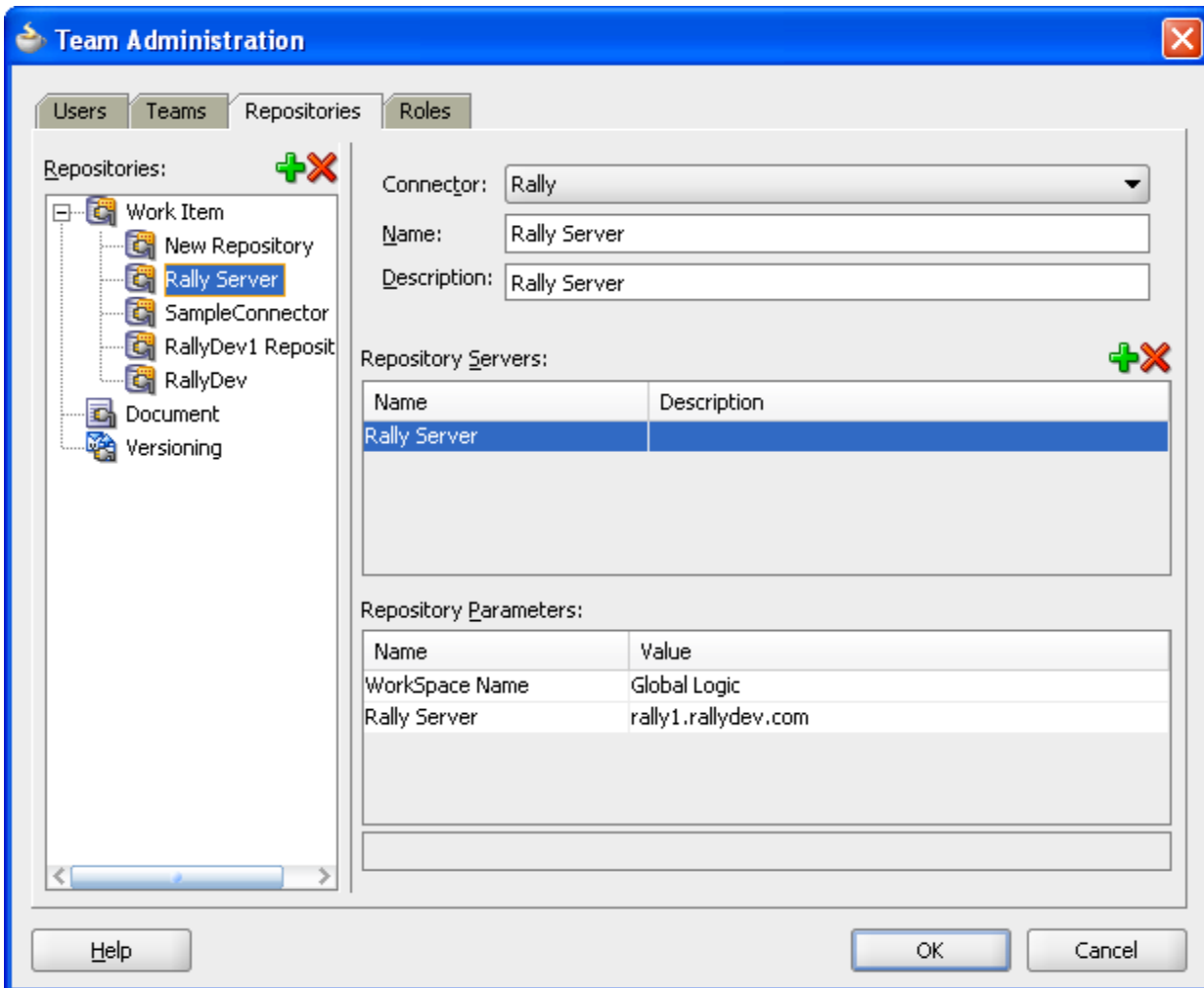
1. Disconnect from Team Server if connected.
2. Connect to Team server with TPC admin credentials.



3. On successfully login into Team Server, click on Team Administration from Team Navigator Menu.



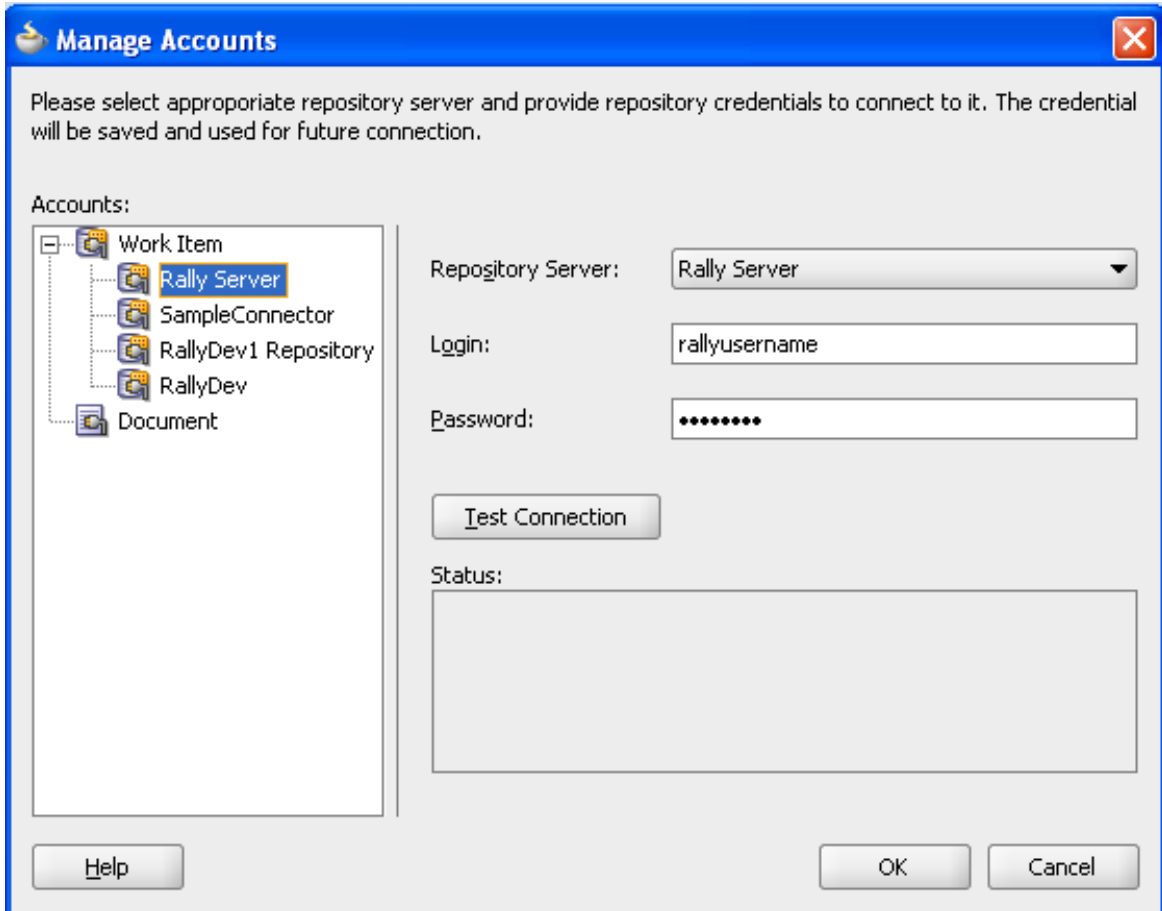
4. Select Repositories Tab from Team Administration window



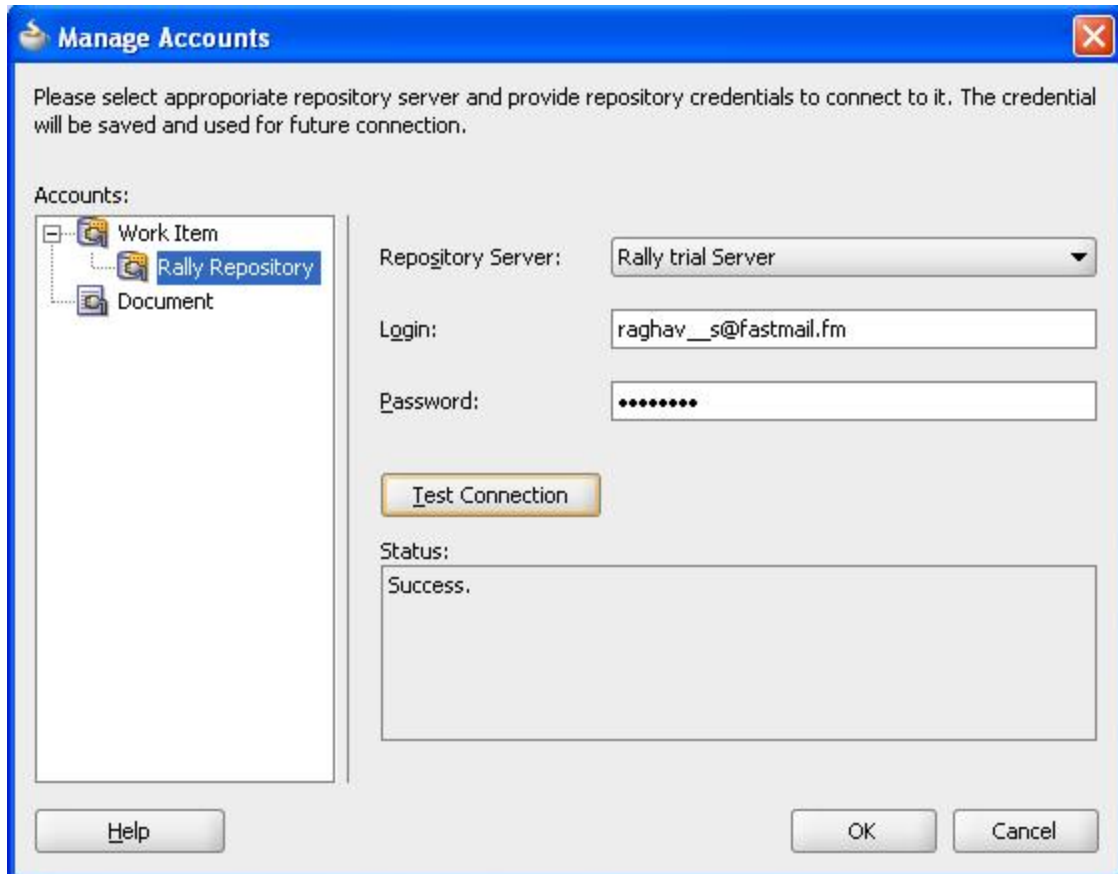
5. Verify the "Repository Parameters". The Rally Server should be either from trial.rallydev.com or rally1.rallydev.com and Workspace name should be the same as in Rally. If the Workspace name is left blank, the connector will use the first Workspace (in alphabetical order) available to the Rally user identified in Step 8 below.
6. Click OK.
7. Go to "Manage Account" from Team Navigator Menu.



8. Specify Rally user name and password and click Test Connection



9. On successful authentication from Rally, "Success" will be shown as shown below



10. Click OK.

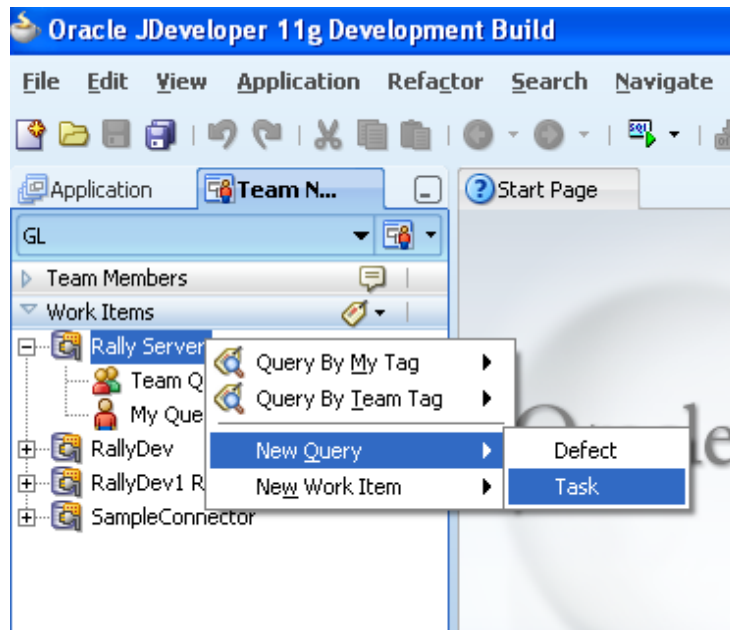
Accessing and Using Rally connector

Rally connector facilitates the Rally user to view and update Tasks and Defects without actually logging to Rally web interface separately.

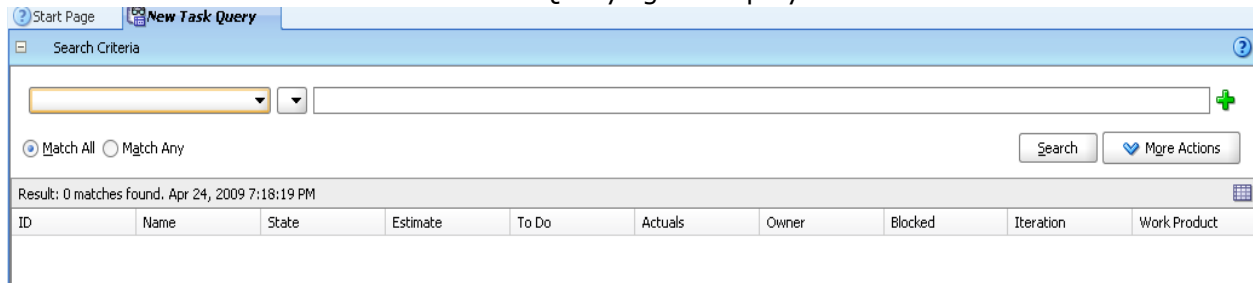
Accessing Task List

The steps to access Task list are:

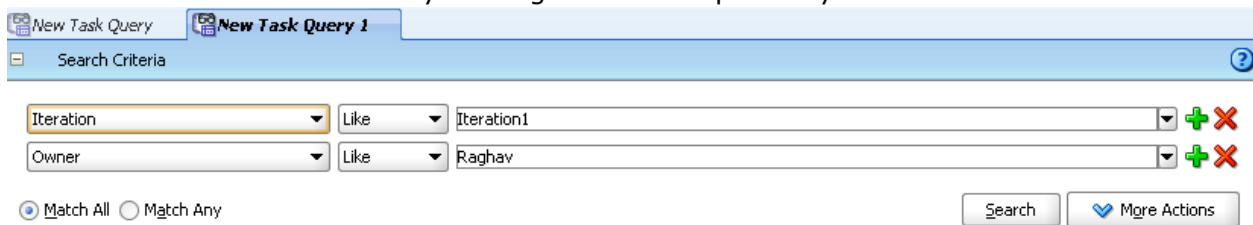
1. Right click on Rally repository from work item palette and select Task from New Query option.



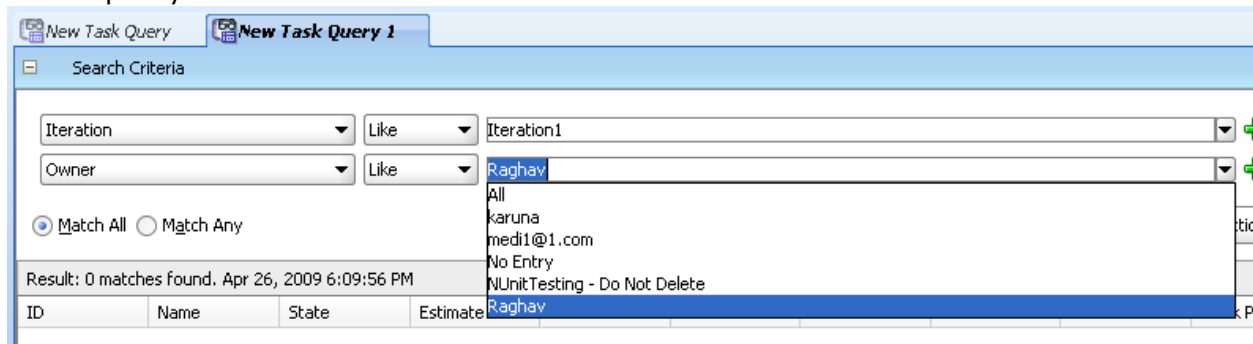
2. A new window named "New Task Query" gets displayed as shown below



3. Click on "+" to add new search criteria on New Task Query screen. Search criteria can be added and removed by clicking + and x respectively



4. Specify values from the combo boxes for each of the search criteria.



5. Select Match All or Match Any option. Match All will retrieve the records which will match all the search criteria(i.e. AND) while Match Any will retrieve the records which will match any of search criteria(i.e. OR)
6. Click on search button to fetch the records matching the specified search criteria.

Search Criteria

Iteration Like All + X
Owner Like Raghav + X

Match All Match Any

Search More Actions

Result: 2 matches found. Apr 26, 2009 6:18:38 PM

ID	Name	State	Estimate	To Do	Actuals	Owner	Blocked	Iteration	Work Product
TA1	Task:Fix DE111ee	Defined	212.0		217.0	Raghav	false		Test Defect 11
TA12	PR 3 Task	In-Progress	50.0	2.0	0.0	Raghav	true	Test Explo...	PR3 User Story

7. The result displayed will be default sorted on ID column.
8. The record can be sorted in ascending or descending order by clicking on corresponding column name.

Search Criteria

Iteration Like All + X

Match All Match Any

Search More Actions

Result: 8 matches found. Apr 26, 2009 6:29:59 PM

ID	Name	State ▲	Estimate	To Do	Actuals	Owner	Blocked	Iteration	Work Product
TA1	Task:Fix DE111ee	Defined	212.0		217.0	Raghav	false		Test Defect 11
TA7	create test cases	Defined	4.0	4.0		medi1@1.c...	true	'Iteration 11"	karuna US
TA20	TaskJdev1	Defined	1.0	1.0		karuna	false	TestIterati...	TestJdevStory
TA21	TaskJdev2	Defined	8.0	8.0			false	TestIterati...	TestJdevStory
TA10	Validation Task	In-Progress	6.0	3.0	2.0		false	Test - KT I...	KT User Story 2
TA12	PR 3 Task	In-Progress	50.0	2.0	0.0	Raghav	true	Test Explo...	PR3 User Story
TA6	task for the defect	In-Progress	66.0	66.0		NUnitTesti...	true		Tomatoes Vs Po
TA4	Task 2	In-Progress	2.0	1.0	66.0	medi1@1.c...	false	'Iteration 11"	User Story 1

Records sorted by State column in asc order

Update Task

1. Retrieve the task list as described in section "**Accessing Task List**".
2. Double click on record from the task list to be displayed in edit mode.

New Task Query New Task Query 1

Search Criteria

Iteration Like All

Match All Match Any

Double click on the record

Search More Actions

Result: 8 matches found. Apr 26, 2009 6:29:59 PM

ID	Name	State	Estimate	To Do	Actuals	Owner	Blocked	Iteration	Work Product
TA1	Task:Fix DE111ee	Defined	212.0		217.0	Raghav	false		Test Defect 11
TA7	create test cases	Defined	4.0	4.0		medi1@1.c...	true	'Iteration 11"	karuna US
TA20	TaskJdev1	Defined	1.0	1.0		karuna	false	TestIterati...	TestJdevStory
TA21	TaskJdev2	Defined	8.0	8.0			false	TestIterati...	TestJdevStory
TA10	Validation Task	In-Progress	6.0	3.0	2.0		false	Test - KT I...	KT User Story 2
TA12	PR 3 Task	In-Progress	50.0	2.0	0.0	Raghav	true	Test Explo...	PR3 User Story
TA6	task for the defect	In-Progress	66.0	66.0		NUnitTesti...	true		Tomatoes Vs Po...
TA4	Task 2	In-Progress	2.0	1.0	66.0	medi1@1.c...	false	'Iteration 11"	User Story 1

3. A new tab will be opened displaying the selected task in "Edit Mode".

New Task Query New Task Query 1 create test cases

Detail * Indicates required field

Relationships

Tags

ID: [TA7](#)

Name: create test cases

Description:

Owner: medi1@1.com

State: Defined Blocked: true

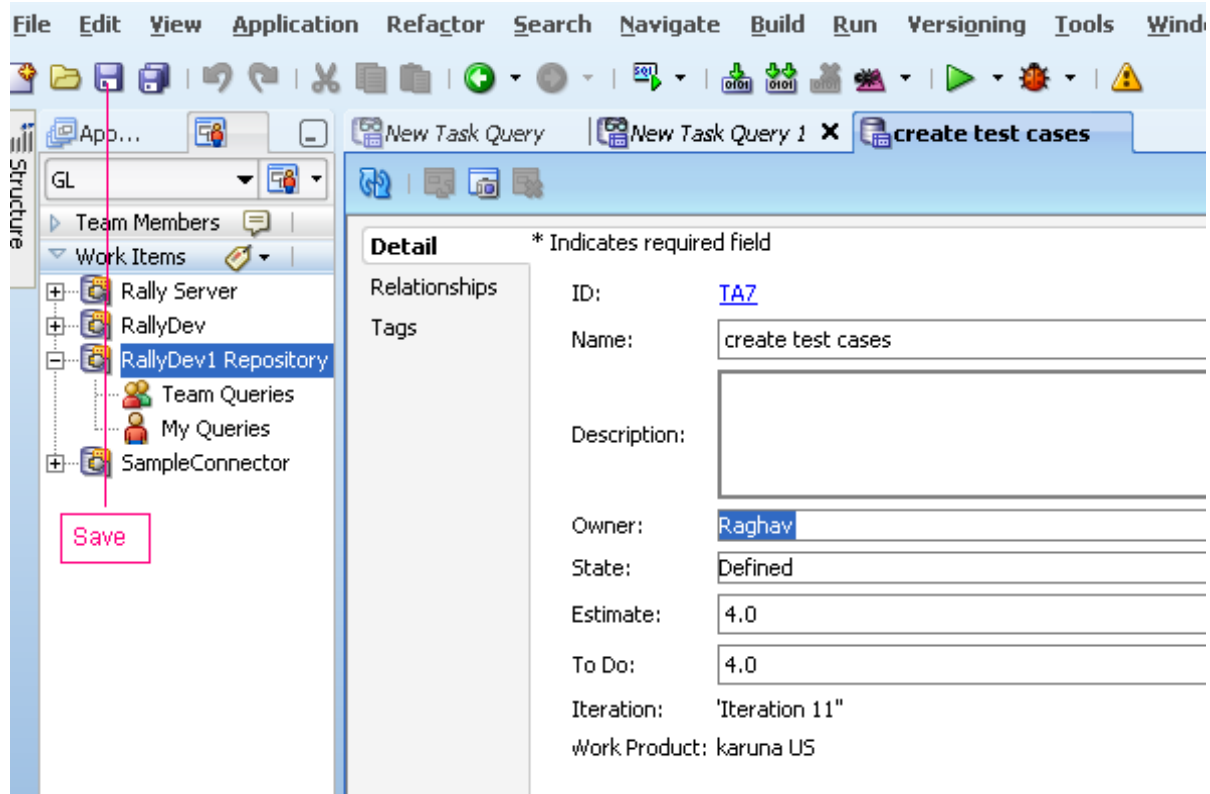
Estimate: 4.0 Actuals:

To Do: 4.0

Iteration: 'Iteration 11"

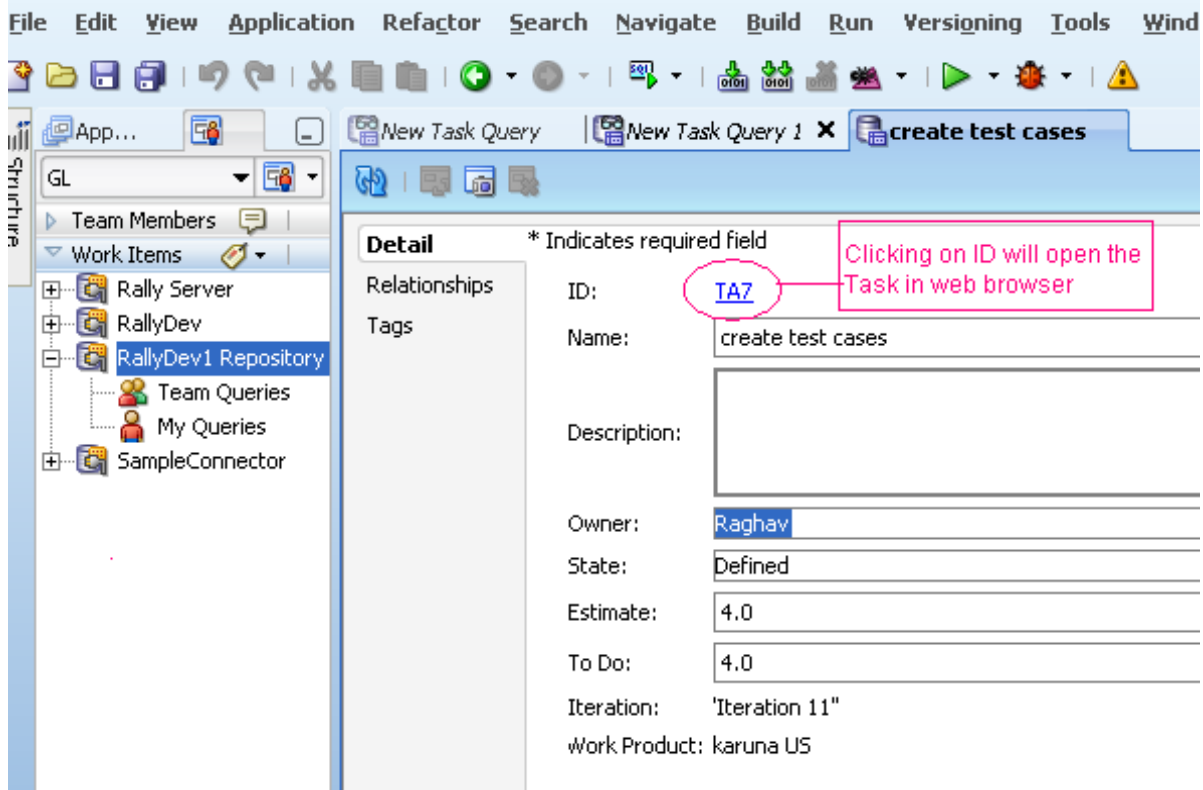
Work Product: karuna US

4. Change the values in the field to be modified and click on Save (shown in toolbar) to persist the changes.



Opening Task in web browser

1. Open Task in Edit mode as mentioned in section "**Update Task**"

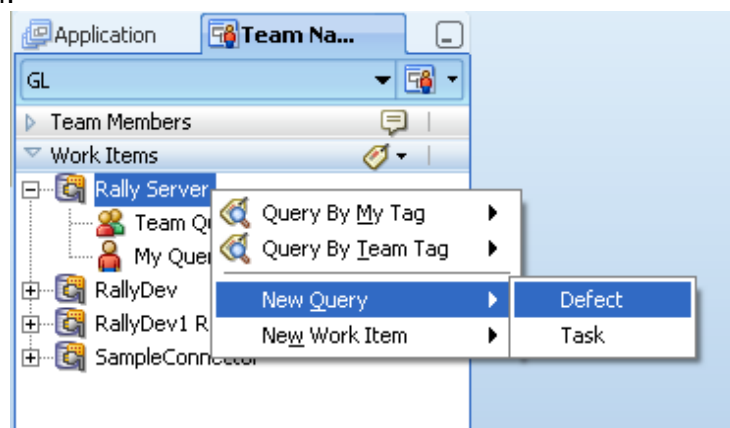


2. Double clicking on ID field will open the task in web browser.

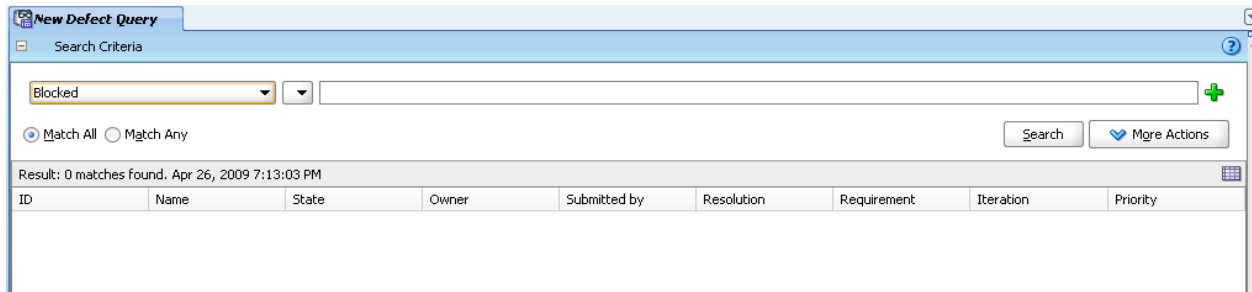
Accessing Defect List

The steps to access Task list are:

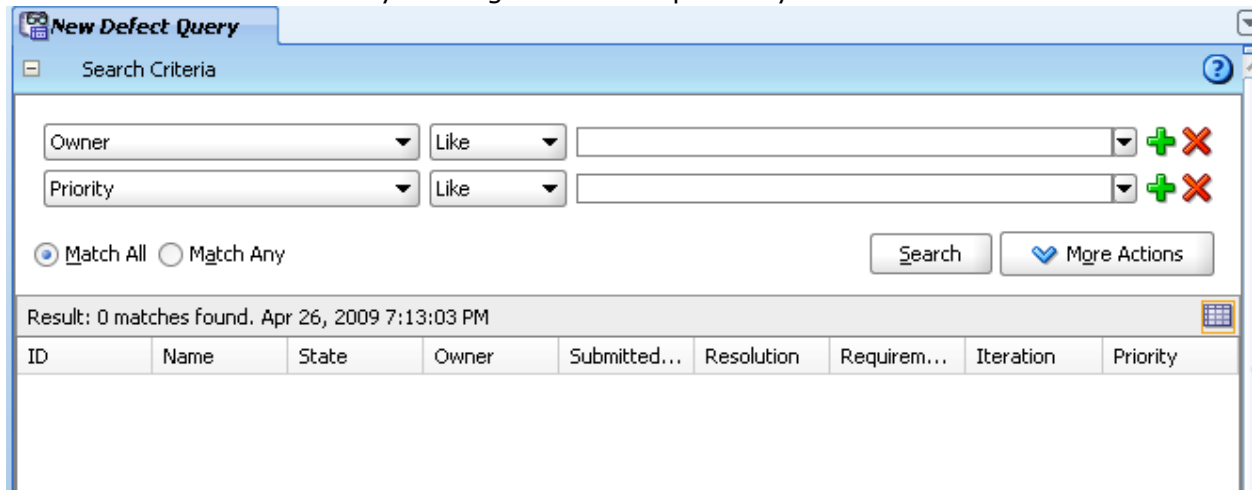
1. Right click on Rally repository from work item palette and select Defect from New Query option.



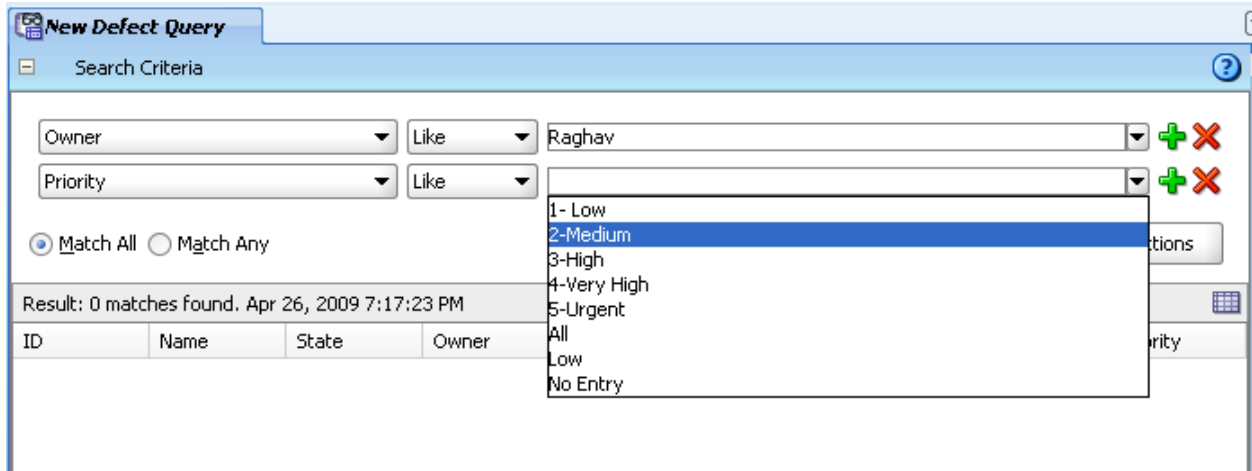
2. A new window named "New Defect Query" gets displayed as shown below



3. Click on "+" to add search criteria on New Defect Query screen. Search criteria can be added and removed by clicking + and x respectively.



4. Specify values from the combo boxes for each of search criteria.



5. Select Match All or Match Any option. Match All will retrieve the records which will match all the search criteria(i.e. AND) while Match Any will retrieve the records which will match any of search criteria(i.e. OR).
6. Click on search button to fetch the records matching the specified search criteria.

New Defect Query

Search Criteria

Owner: Like Raghav + X
 Priority: Like 3-High + X

Match All Match Any

Search More Actions

Result: 7 matches found. Apr 26, 2009 7:18:47 PM

ID	Name	State	Owner	Submitted by	Resolution	Requirement	Iteration	Priority
DE6	MApping Fi...	New	Raghav	Raghav				3-High
DE8	Timezone ...	Open	Raghav	Raghav				3-High
DE16	Error foun...	Reopen	Raghav	Raghav	Duplicate			3-High
DE20	hehehe	New	Raghav	Raghav				3-High
DE21	faulty defe...	Reopen	Raghav	Raghav				3-High
DE33	get me dia...	New	Raghav	Raghav				3-High
DE37	defect for ...	New	Raghav	medi1@1.c...				3-High

- The result displayed will be default sorted on ID column.
- The record can be sorted in ascending or descending order by clicking on corresponding column name.

New Defect Query

Search Criteria

Owner: Like Raghav + X
 Priority: Like 3-High + X

Match All Match Any

Search More Actions

Result: 7 matches found. Apr 26, 2009 7:18:47 PM

ID	Name	State ▲	Owner	Submitted by	Resolution	Requirement	Iteration	Priority
DE6	MApping Fi...	New	Raghav	Raghav				3-High
DE20	hehehe	New	Raghav	Raghav				3-High
DE33	get me dia...	New	Raghav	Raghav				3-High
DE37	defect for ...	New	Raghav	medi1@1.c...				3-High
DE8	Timezone ...	Open	Raghav	Raghav				3-High
DE16	Error foun...	Reopen	Raghav	Raghav	Duplicate			3-High
DE21	faulty defe...	Reopen	Raghav	Raghav				3-High

Records sorted by State column in asc order

Update Defect

- Retrieve the defect list as described in section "**Accessing Defect List**".

2. Double click on record from the defect list to be displayed in edit mode.

Search Criteria

Owner: Like Raghav
Priority: Like 3-High

Match All Match Any

Search

Result: 7 matches found. Apr 26, 2009 7:18:47 PM

ID	Name	State	Owner	Submitted by	Resolution	Requirement	Iteration	Priority
DE6	MApping File - Service 6 ...	New	Raghav	Raghav				3-High
DE20	hehehe	New	Raghav	Raghav				3-High
DE33	get me diamonds	New	Raghav	Raghav				3-High
DE37	defect for tiranga	New	Raghav	medi1@1.c...				3-High
DE8	Timezone Testing	Open	Raghav	Raghav				3-High
DE16	Error found in TC53: kar...	Reopen	Raghav	Raghav	Duplicate			3-High
DE21	faulty defect linking...@...	Reopen	Raghav	Raghav				3-High

3. A new tab will be opened displaying the selected defect in "Edit Mode". The tab name will display the defect name.

Detail * Indicates required field

Relationships

Tags

ID: [IA7](#)

Name: create test cases

Description:

Owner: medi1@1.com

State: Defined Blocked: true

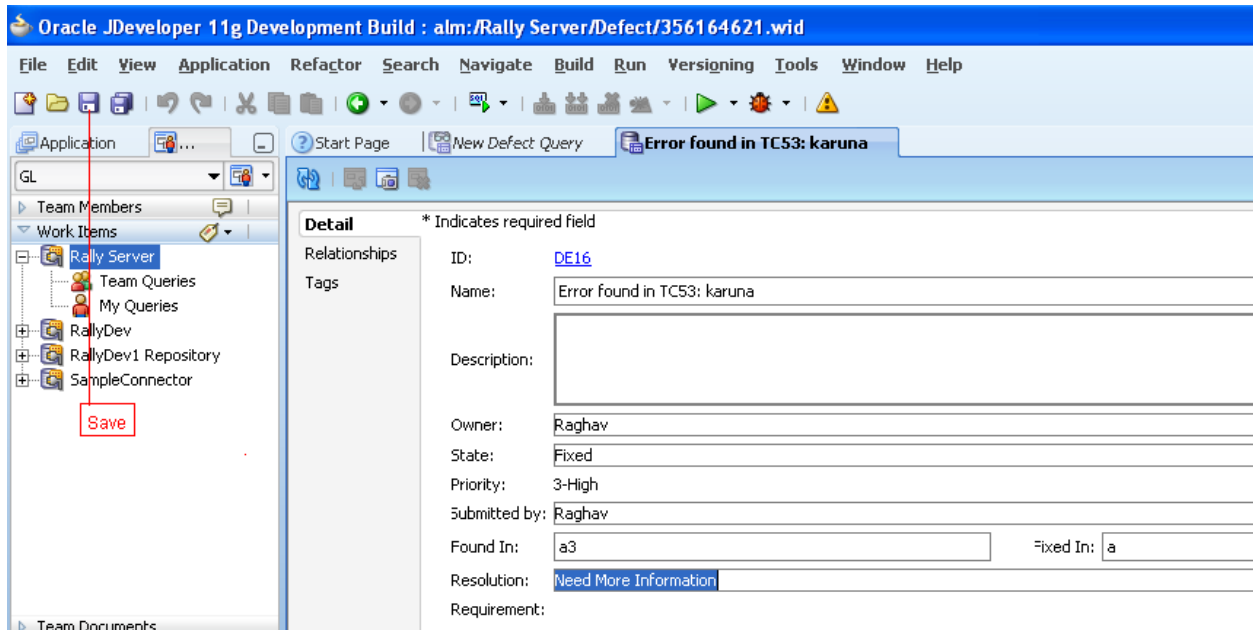
Estimate: 4.0 Actuals:

To Do: 4.0

Iteration: Iteration 11

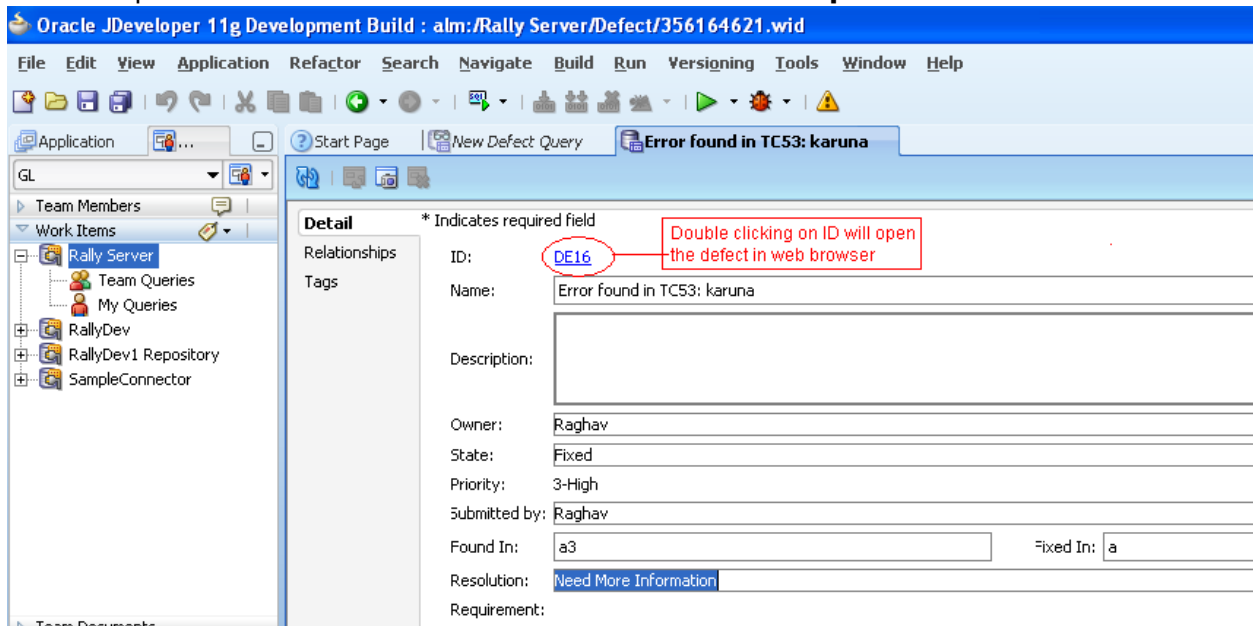
Work Product: karuna US

4. Change the values in the field to be modified and click on Save (shown in toolbar) to persist the changes.



Opening Defect in web browser

1. Open Defect in Edit mode as mentioned in section "**Update Defect**"



2. Double clicking on ID field will open the defect in web browser

Logging

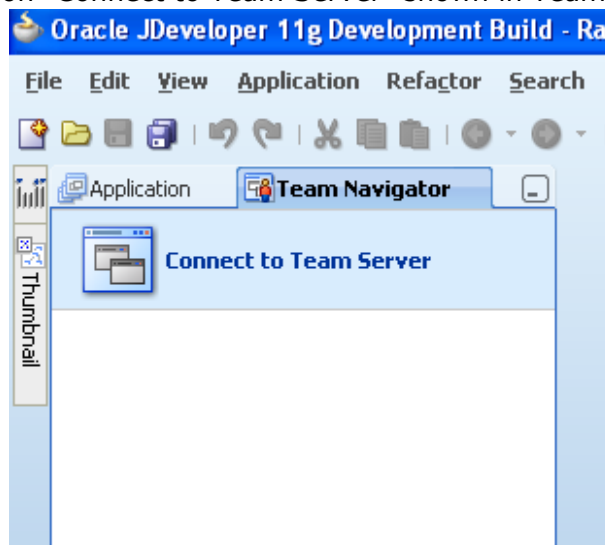
The logging of connector is handled by using the Apache log4j component. The log file named RallyConnector.log can be located in Rally connector installation directory of JDeveloper. By default the connector log shows only ERROR level messages. The log level can be changed to show debug, info, or other log levels. Following are the steps to change log level:

1. Go to the JDeveloper directory in which Rally connector is installed. e.g. {Oracle_HOME}/ /jdev/extensions/oracle.teamproductivitycenter/connectors/Rally directory.
2. Open log4j.xml present in Rally directory.
3. By default the log level is configured to ERROR level. This can be changed to INFO, DEBUG etc level to show debug, info level.
4. Save the changes.
5. Restart JDeveloper.

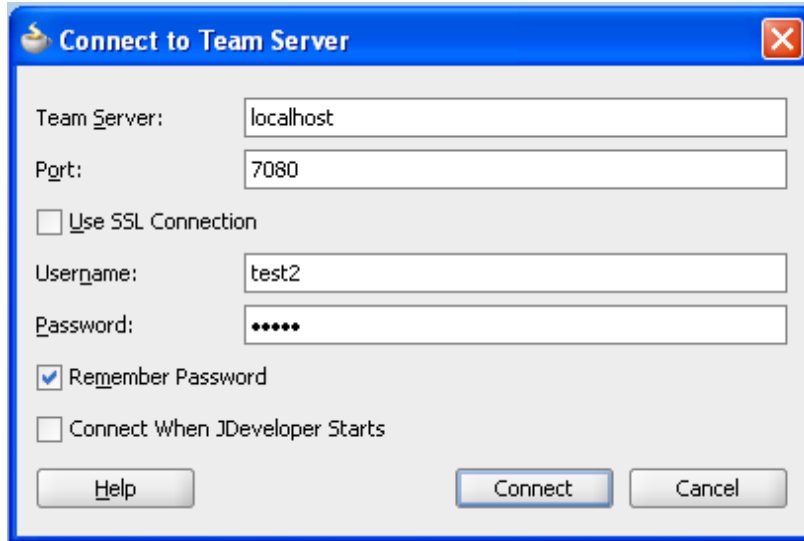
Switching Workspace

Following are the steps to change workspace for Rally connector:

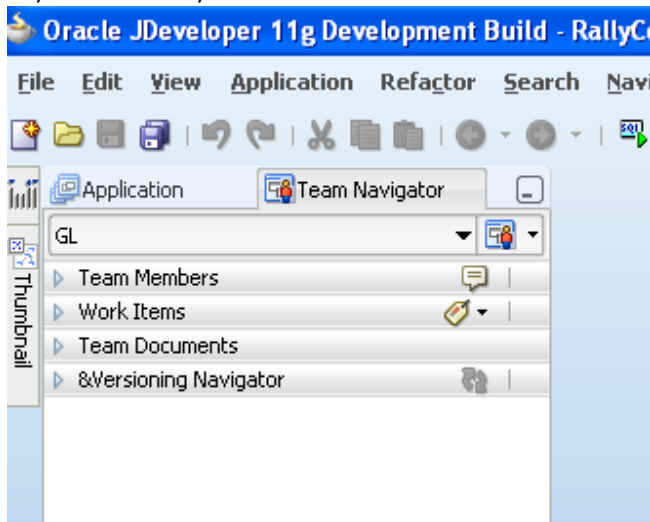
1. Open JDeveloper.
2. Open Team Navigator by clicking on Team Navigator in View Menu.
3. Click on "Connect to Team Server" shown in Team Navigator panel.



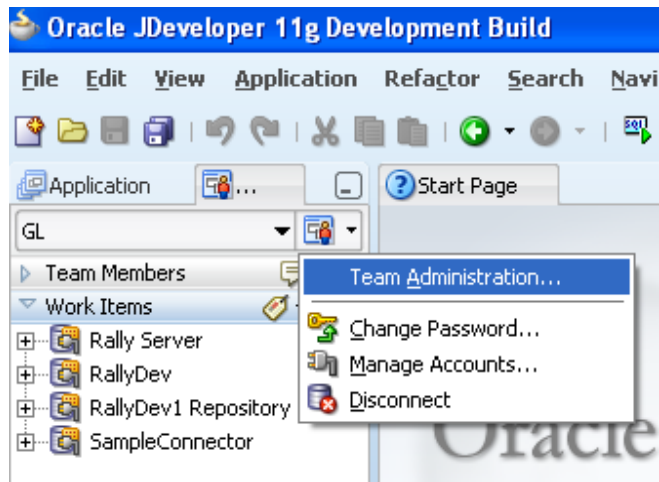
4. Specify TPC server and port detail.
5. Specify TPC admin username and password.



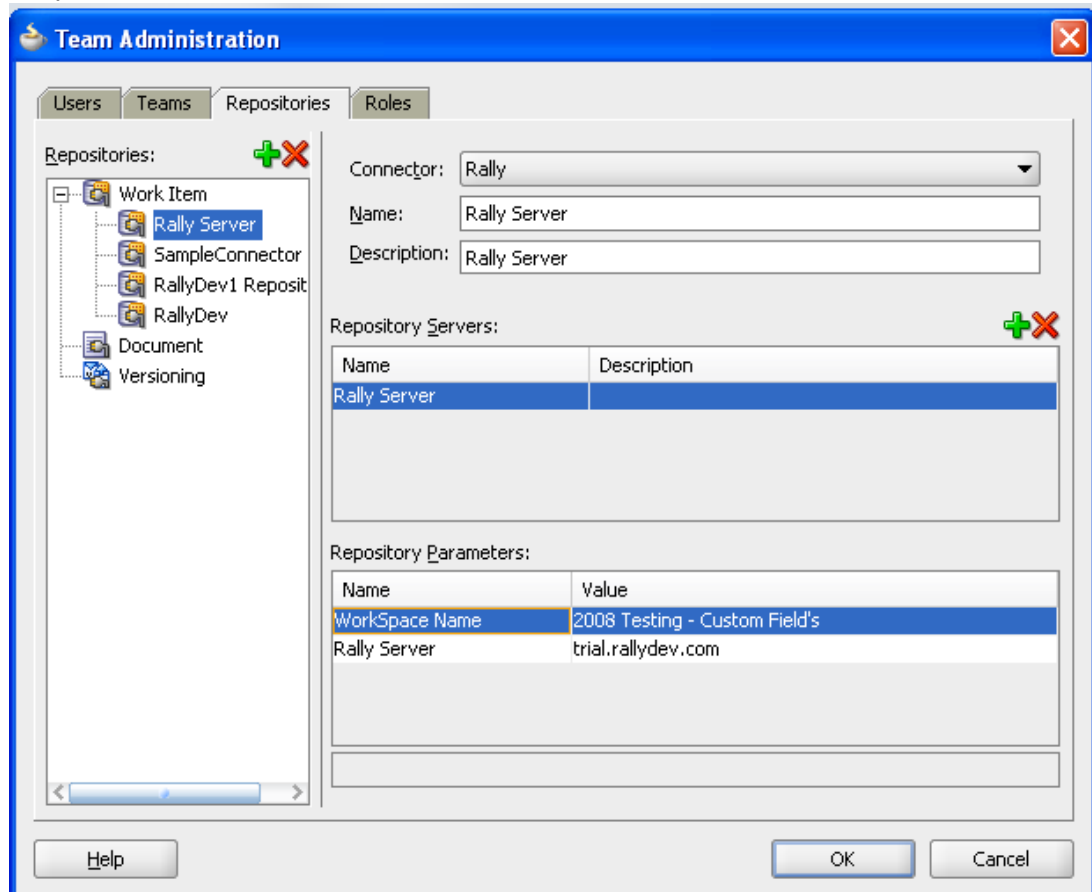
6. Click on connect.
7. On successfully login into Team Server, Team Navigator panel will show Team Member, Work Item, Team document and Version navigator palettes.



8. Select Team Administration from Team Navigator Menu to open Team Administration window.



9. Select Repositories Tab from Team Administration window.



10. Select Rally connector from WorkItem as shown in above figure. Modify Repository parameters for workspace and rally server.

11. Click OK.

